

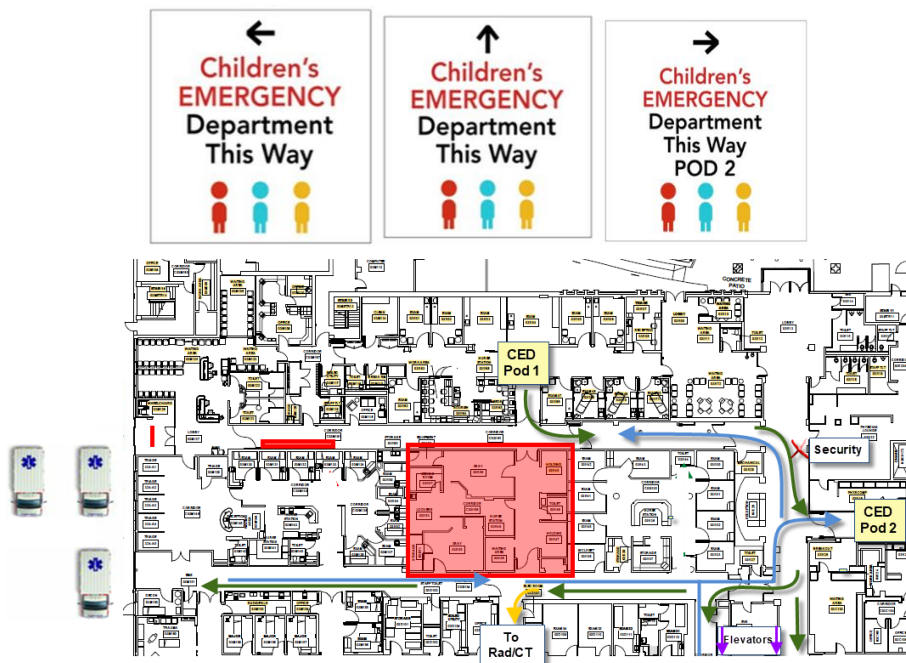
For awareness, the ED radiology suite at CMC's Children's ED has been fully relocated to the new ED radiology space. The **old radiology space and corridor (Red Box below)** that connects the 2 ED suite corridors will be **closed beginning today, 20 Nov 2020** and is expected to remain closed thru Feb 2021. Demolition will begin on **Mon, 23 Nov 2020**.

Please see the process map below regarding EMS/Elevator entry to the CED Pod1 and Pod2 areas (blue), egress from CED Pod 1 to Pod to the elevators, LCH, or the exit (green), and to Radiology/CT (yellow).

From the EMS entrance perspective temporary signage has been placed approximately every 12 feet and at intersection points (see below), and permanent signage is expected to be hung next week.

Atrium continues to evaluate the opportunity to transport critical EMS pediatric arrivals through the adult Triage area, and up the walk-in hallway, however hours for this may be limited to overnights/weekends due to Triage/Registration desk congestion, and the potential for PUI patients in that **corridor space (long red rectangle)** during daily Intake operations.

Security should be located in the location signified by 'X' to assist with entry into Pod 1 and Pod 2. Physical Security is actively working to ensure functionality and install additional numerical keypads and as soon as I know more I will forward that information to you.



Old radiology space and corridor –Red Box

EMS/Elevator entry to the CED Pod1 and Pod2 areas (blue),

Egress from CED Pod 1 to Pod to the elevators, LCH, or the exit (green)

Radiology/CT (yellow).

Corridor space (long red rectangle)