



COVID-19 FACILITIES INFO

EIDS+ PPE Required Listing

Wear EIDS+ appropriate PPE (gown, gloves, goggles or face shield, N95) for all patients at the following facilities:

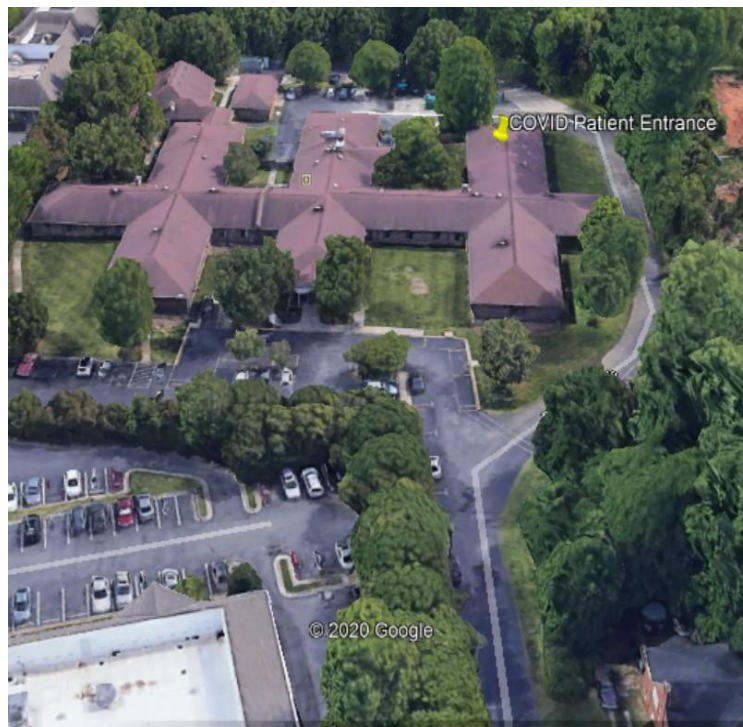
- Peak Resources, 3223 Central Avenue, Charlotte
- Hunter Woods, 620 Tom Hunter Road, Charlotte
- Brian Center Health & Rehab, 5939 Reddman Road, Charlotte
- Plantation Estates Drive, 701 Plantation Estates Parkway, Matthews
- Other facilities have dedicated wings and you will be informed on dispatch and CAD notes

Facility Response Guidelines

Pelican Health

2616 E 5th Street, Charlotte

A “West Wing” for lab confirmed COVID-19 positive patients has been identified at Pelican Health, located at 2616 E 5th Street. Crews responding at this location should report to the back door of the West Wing as shown on the image below. Position the ambulance parallel to the building on the curb. The crew will be required to knock on the door, and must be in full PPE (including gowns). For non-COVID positive patients, continue to utilize the East Wing and don surgical masks, shield or goggles and gloves (no gowns required).



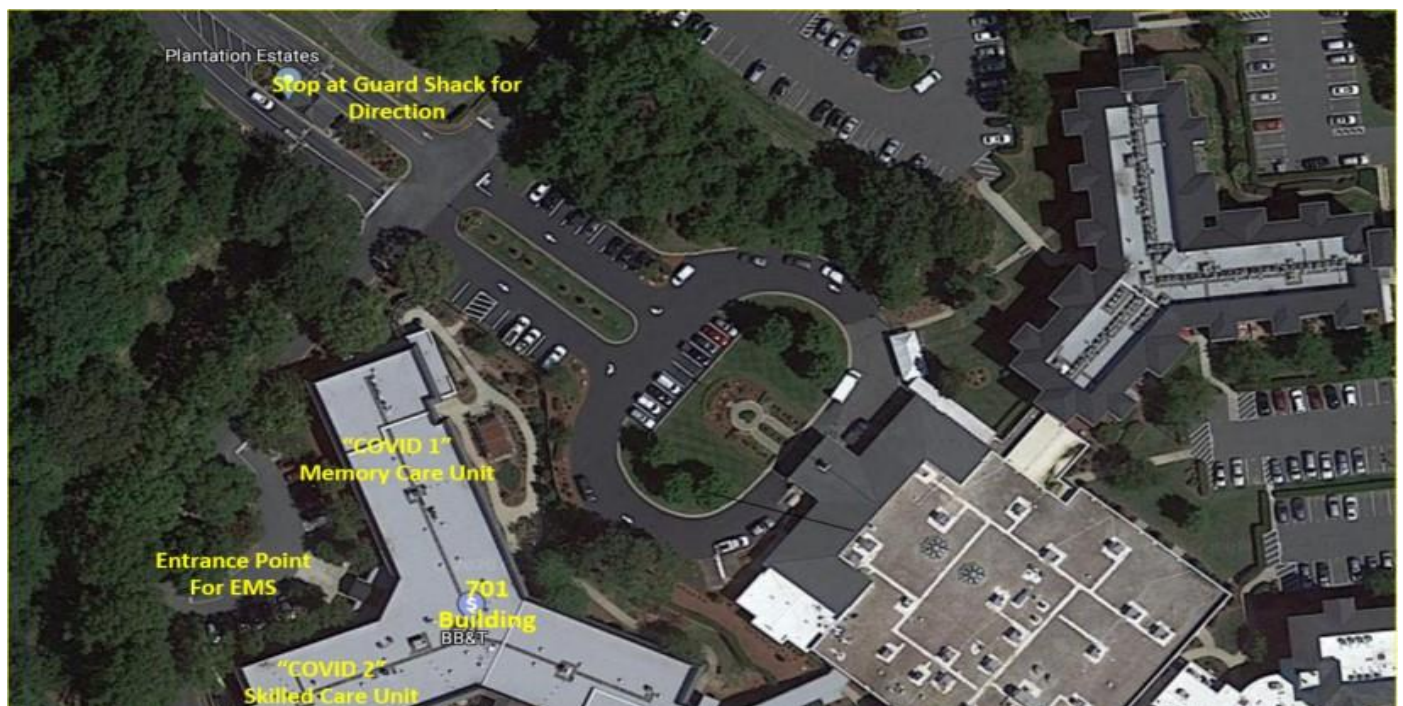
Plantation Estates

701 Plantation Estates Drive, Matthews

Plantation Estates in Matthews has designated their Skilled Nursing Care and Memory Care building for COVID isolation patients. This building has three separate halls, and they will all have a singular function during the current pandemic response:

- All Memory Care patients that are COVID Positive will be housed in the Memory Care Unit. Currently designated "COVID-1"
- All Skilled Nursing Patients that are COVID Positive will be housed in the Skilled Care Unit. Currently designated "COVID-2"
- All other advanced care patients who are COVID Negative will be housed in the second hall of Skilled Care located in the southwest corner. "Non-COVID"
- A designated staff member will be on site at the building entrance to guide EMS crew to patient room.

Please see the below instructions and map for EMS responses to the facility. These response directives have been reviewed and approved by Plantation Estates administration, security, and nursing administration.



Response recommendations:

1. Enter Facility from Hwy 51 only
2. Stop at Guard Shack for Direction
3. Proceed to Main Entrance of 701 Building
4. All personnel don COVID PPE prior to entry into facility
5. Meet staff member inside entrance point
6. Proceed to COVID 1 or COVID 2 with staff escort
7. Utilize same entrance point for Non-COVID wing
8. Utilize main entrance for all patient egress from facility

University Place Nursing & Rehab
9200 Glenwater Drive, Charlotte

University Place Nursing has identified their COVID and non-COVID points of entry. Please see the attached aerial photo for reference to these entrances.

The front entrance, blue star, is where we will enter for non-COVID patients. The rear entrance, red star, is where we will enter/exit for COVID+ patients.

We have asked the staff to inform our communications staff of the patient's COVID status and which entrance to utilize when placing a 911 call. Unfortunately, we do not know which room numbers/halls are being used as their COVID unit at this time.

